

SA Series

Large capacitance

Miniaturized products

SA series is miniaturized SC series with large capacitance. Suitable for high frequency switching power supplies, etc.



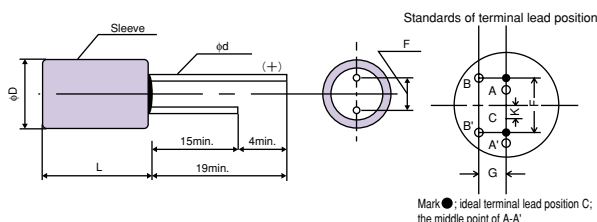
Specifications

Items	Conditions	Characteristics		
Category temperature range	—	-55°C to +105°C		
Tolerance on rated capacitance	120Hz	M : ±20%		
Tangent of loss angle	120Hz	Less than or equal to the value of Table14		
Leakage current ※1	After 2 minutes	Less than or equal to the value of Table14		
ESR	—	Less than or equal to the value of Table14		
Characteristics of impedance ratio at high temp. and low temp.	Based the value at 100KHz, +20°C	-55°C	Z / Z 20°C	0.75 to 1.25
		+105°C	Z / Z 20°C	0.75 to 1.25
Endurance	105°C, 2,000h, Rated voltage applied	ΔC/C	Within ±20%	
		tanδ	1.5 times or less than an initial standard	
		Leakage current	Below an initial standard	
Damp heat (Steady state)	60°C, 90 to 95%RH, 1,000h, No-applied voltage	ΔC/C	Within ±10%	
		tanδ	1.5 times or less than an initial standard	
		Leakage current	Below an initial standard	
Resistance to soldering heat	Flow method (260±5°C X 10s)	ΔC/C	Within ±5%	
		tanδ	Below an initial standard	
		Leakage current	Below an initial standard (after voltage processing)	

※1 In case of some problems for measured values, measure after applying rated voltage for 30 minutes at 105°C.

Dimensions

(unit : mm)



Size Code	φD+0.5max.	Lmax.	F	φd±0.05	Gmax.	Kmax.
C	6.3	7.8	2.5±0.5	0.45	0.5	0.5
D	6.3	10.8	2.5±0.5	0.60	0.5	0.5
E	8.0	11.5	3.5±0.5	0.60	0.8	0.8
F	10.0	11.5	5.0±0.5	0.60	0.8	0.8
G	12.5	23.0	5.0±1.0	0.80	0.8	0.8
H	16.0	26.0	7.5±1.0	0.80	0.8	0.8

Size List

RV : Rated voltage

(SV) : Surge (room temperature)

μF	RV (SV)	6.3 (7.2)	10 (11.5)	16 (18.4)	20 (23.0)
15					C
22					C
33				C	D
47	C			D	E
68			D		E
100				E	F
150	E			F	
220			F		
330	F				
470				G	
1000				H	
2200	H				

※For the minimum packing quantity, please refer to page 53.

Table14 SA Series Characteristics List

Size Code	Part Number ※1	Rated Voltage (V)	Rated Capacitance (μF)	ESR 100kHz to 300kHz (mΩ) (max.)	Allowable ripple current (mA) ※3	Tangent of loss angle (max.)	Leakage current (μA) (max.) ※2
C	20SA15M	20	15	90	1200	0.06	6.00
	20SA22M	20	22	70	1300	0.06	8.80
	16SA33M	16	33	70	1370	0.06	10.56
	6SA47M	6.3	47	60	1430	0.07	5.92
D	20SA33M	20	33	70	1710	0.06	13.20
	16SA47M	16	47	60	1830	0.06	15.04
	10SA68M	10	68	50	2000	0.07	13.60
E	20SA47M	20	47	40	2450	0.06	18.80
	20SA68M	20	68	36	2600	0.06	27.20
	16SA100M	16	100	30	2740	0.06	32.00
	6SA150M	6.3	150	30	2780	0.07	18.90
F	20SA100M	20	100	30	3210	0.06	40.00
	16SA150M	16	150	28	3260	0.06	48.00
	10SA220M	10	220	27	3370	0.07	44.00
	6SA330M	6.3	330	25	3500	0.07	41.58
G	16SA470M	16	470	20	6080	0.08	300.80
H	16SA1000M	16	1000	15	9750	0.09	640.00
	6SA2200M	6.3	2200	15	9750	0.13	554.40

※1 Tolerance on rated capacitance : M ±20%

※2 After 2 minutes

※3 100kHz, +45°C

Temperature coefficient for allowable ripple current

Ambient Temp.	$T_x \leq 45^\circ\text{C}$	$45^\circ\text{C} < T_x \leq 65^\circ\text{C}$	$65^\circ\text{C} < T_x \leq 85^\circ\text{C}$	$85^\circ\text{C} < T_x \leq 95^\circ\text{C}$	$95^\circ\text{C} < T_x \leq 105^\circ\text{C}$
Coefficient	1	0.85	0.7	0.4	0.25

Frequency coefficient for allowable ripple current

Frequency	$120\text{Hz} \leq f < 1\text{kHz}$	$1\text{kHz} \leq f < 10\text{kHz}$	$10\text{kHz} \leq f < 100\text{kHz}$	$100\text{kHz} \leq f \leq 500\text{kHz}$
Coefficient	0.05	0.2	0.5	1