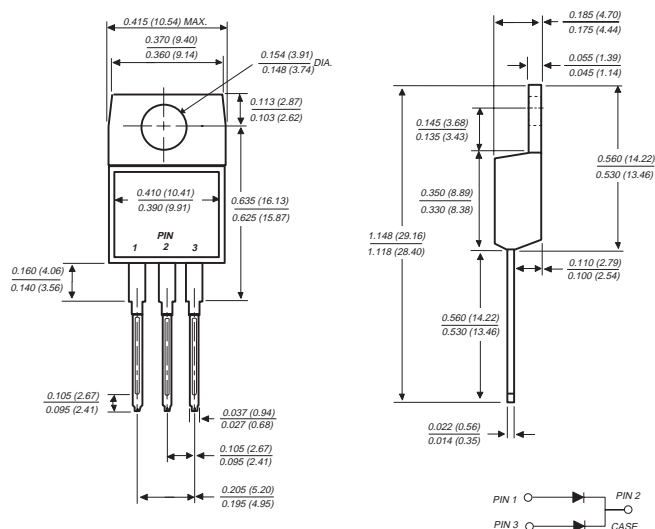


# SBL1030CT AND SBL1040CT

## SCHOTTKY RECTIFIER

Reverse Voltage - 30 and 40 Volts      Forward Current - 10.0 Amperes

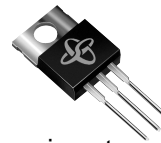
### TO-220AB



Dimensions in inches and (millimeters)

### FEATURES

- ◆ Plastic package has Underwriters Laboratory Flammability Classifications 94V-0
- ◆ Metal silicon junction, majority carrier conduction
- ◆ Low power loss, high efficiency
- ◆ High current capability, low forward voltage drop
- ◆ High surge capacity
- ◆ For use in low voltage, high frequency inverters, free wheeling, and polarity protection applications
- ◆ Guardring for overvoltage protection
- ◆ High temperature soldering guaranteed: 250°C/10 seconds, 0.25" (6.35mm) from case



### MECHANICAL DATA

**Case:** JEDEC TO-220AB molded plastic body  
**Terminals:** Lead solderable per MIL-STD-750, Method 2026

**Polarity:** As marked

**Mounting Position:** Any

**Mounting Torque:** 5 in. - lbs max.

**Weight:** 0.08 ounce, 2.24 grams

### MAXIMUM RATINGS AND ELECTRICAL CHARACTERISTICS

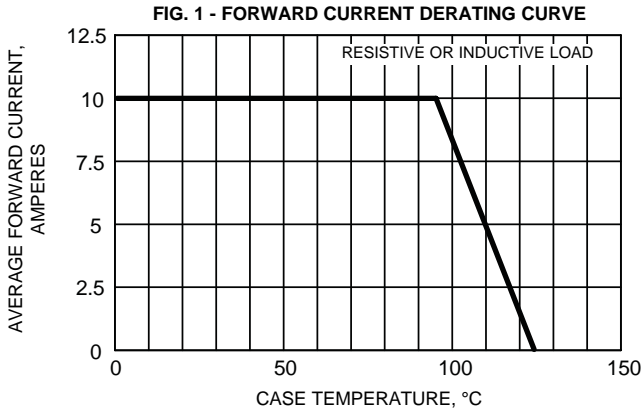
Ratings at 25°C ambient temperature unless otherwise specified.

	SYMBOLS	SBL1030CT	SBL1040CT	UNITS
Maximum repetitive peak reverse voltage	$V_{RRM}$	30	40	Volts
Maximum RMS voltage	$V_{RMS}$	21	28	Volts
Maximum DC blocking voltage	$V_{DC}$	30	40	Volts
Maximum average forward rectified current at $T_C=95^\circ\text{C}$	$I_{(AV)}$	10.0		Amps
Peak forward surge current, 8.3ms single half sine-wave superimposed on rated load (JEDEC Method)	$I_{FSM}$	175.0		Amps
Maximum instantaneous forward voltage per leg at 5.0A (NOTE 1)	$V_F$	0.55		Volts
Maximum instantaneous reverse current at rated DC blocking voltage (NOTE 1)	$I_R$	$T_C=25^\circ\text{C}$ $T_C=100^\circ\text{C}$	0.5 50.0	mA
Typical thermal resistance (NOTE 2)	$R_{\theta JC}$	3.0		$^\circ\text{C}/\text{W}$
Operating and storage temperature range	$T_J, T_{STG}$	-40 to +125		$^\circ\text{C}$

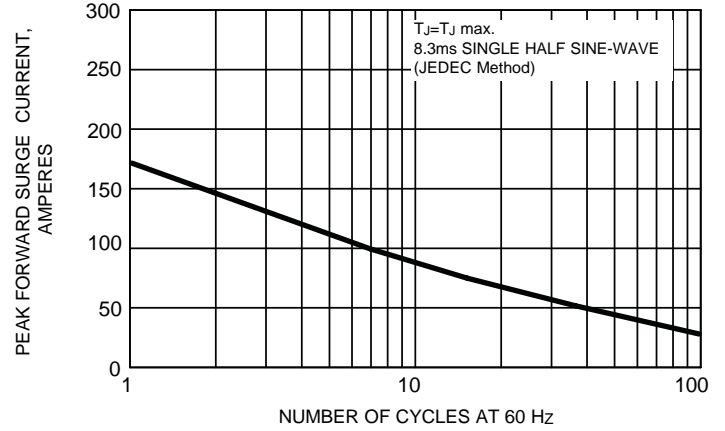
#### NOTES:

- (1) Pulse test: 300 $\mu\text{s}$  pulse width, 1% duty cycle
- (2) Thermal resistance from junction to case per leg

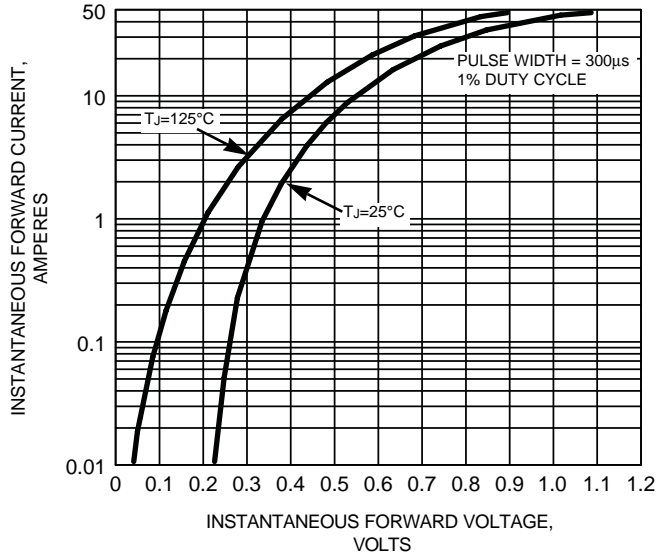
# RATINGS AND CHARACTERISTIC CURVES SBL1030CT AND SBL1040CT



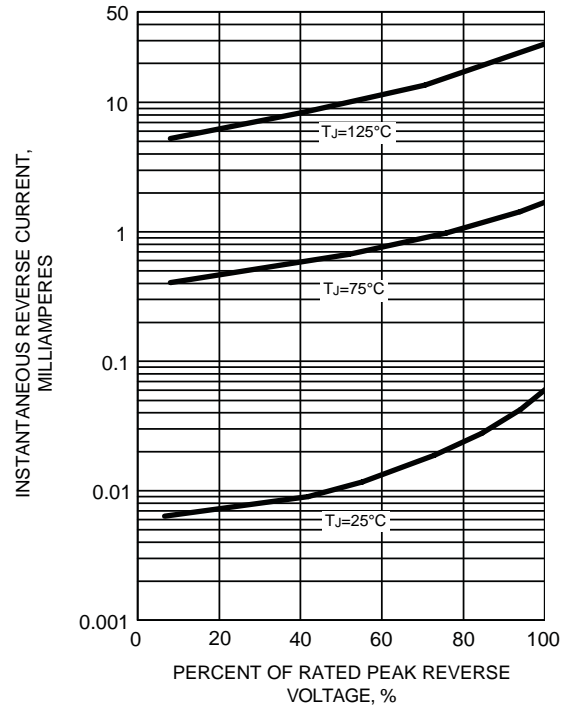
**FIG. 2 - MAXIMUM NON-REPETITIVE PEAK FORWARD SURGE CURRENT**



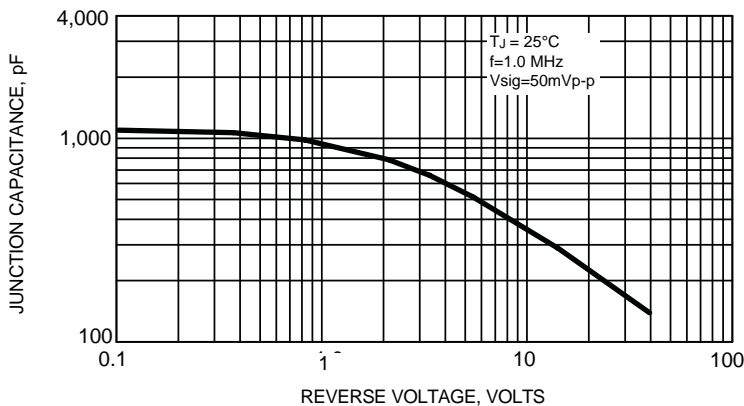
**FIG. 3 - TYPICAL INSTANTANEOUS FORWARD CHARACTERISTICS PER LEG**



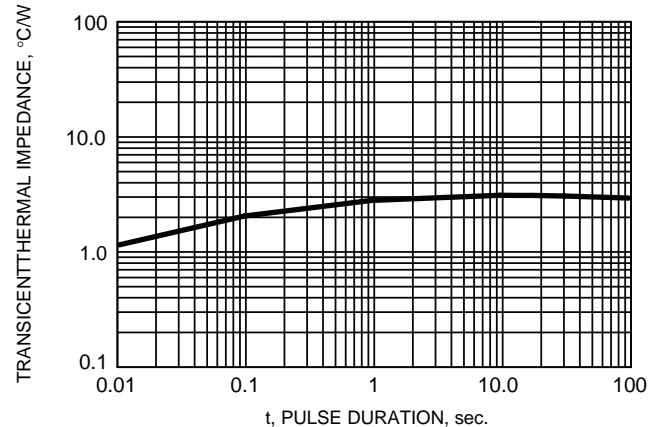
**FIG. 4 - TYPICAL REVERSE CHARACTERISTICS PER LEG**



**FIG. 5 - TYPICAL JUNCTION CAPACITANCE PER LEG**



**FIG. 6 - TYPICAL TRANSIENT THERMAL IMPEDANCE PER LEG**



This datasheet has been download from:

[www.datasheetcatalog.com](http://www.datasheetcatalog.com)

Datasheets for electronics components.